

COMPETITOR AMENITIES AVAILABLE:

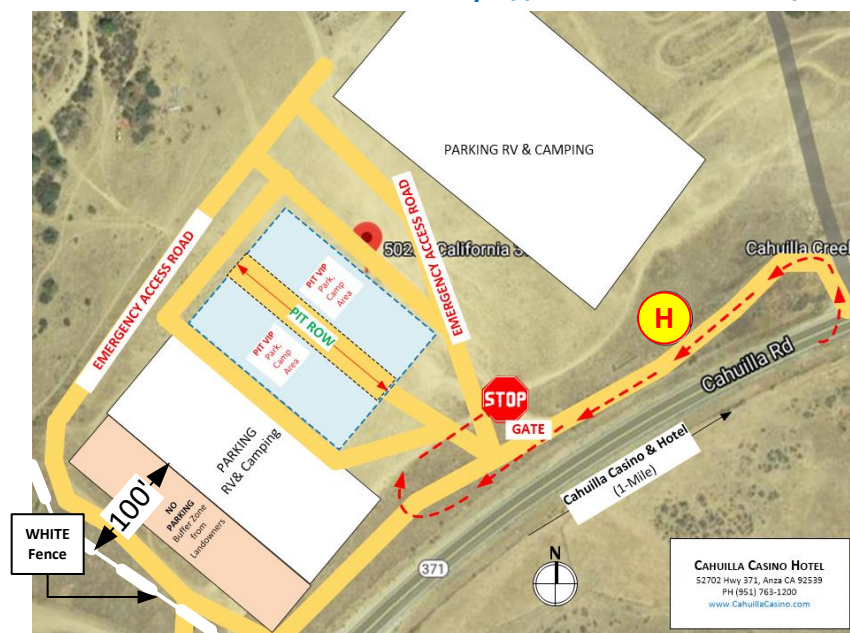
- **Cahuilla Casino Hotel & Fuel** - 1-mile from PITS 52702 US Hwy 371 Anza CA 92539 PH 951-763-1200. Use Block room rate code "SoCalNat25"
- Other **hotels, restaurants, shops/amenities** available in Temecula CA -30-minutes away.
- Great **wineries in Temecula** if interested visit <https://www.visitemeculavalley.com/>
- **RV Camping for Wednesday night/Sunday night** can be found at www.RanchoRVresort.com – 15-minutes away.PH 951-767-1788

MOTOVENTURES® operates on the private, conveniently located, ideally-suited, 350-acre Southern California Rider Training Center in Anza, California. This location is 30 minutes outside of the Temecula wine country area, in Southwest Riverside County.



50250 US Hwy 371, Anza CA 9253992539

<https://motoventures.com/>



&



AMA – NATC National MotoTrials Championship Rd's 3 & 4 at Motoventures, Anza CA

53rd EL TRIAL de ESPAÑA

4/12/25 Shootout
PROS Only PM!

IMPORTANT COMPETITOR & SPECTATOR INFORMATION

Welcome to **Motoventures**, you have entered the sovereign nation of the **Cahuilla Indians**, treat the area with respect.

- Entry to Motoventures earlier than Thursday (4/10/25) at 9am prohibited includes teams and vendors.
- Land use fee per person per day \$10.00 Max \$20 for weekend no camping fee.
- Sign AMA Liability waiver sheet.
- Wrist Bands must be worn on-site – No wrist band no entry.
- No riding, parking, within 100-feet from WHITE fence in front of house on property.
- Take everything you brought in – Out.
- Elevation is about 3,600 feet ASL.
- PIT Speed 5mph.
- All Dogs must be on a leash.
- Park / Camp only as directed.
- No Moto-X or Enduro type bikes.
- Loop direction for competitors is "Clockwise".
- April 12, 2025 - **Rd 3 of the AMA-NATC Trials Store USA National** (All Ntl classes) & **53rd ETdE event (Sat 4/12/2025) is for PRO class only** (All classes ETdE) will occur the weekend (4/26-27-2025) at this location.
- April 13, 2025 - **Rd 4 of the AMA-NATC Trials Store USA National** (All Ntl classes)
- **MotoTrials competitor loop** is defined by NATC standard arrows & marking. Always on your right. If you see arrows with an "X" on your left you're going the wrong way!
- No OPEN Riding on any motor driven machine, other than competitors & support staff in designated areas. Mountain Bikes & e-Bikes OK.

SCHEDULE of EVENTS

Thursday – April 10, 2025

Enter property 9:00am – 4:00pm

Practice 11:00am – 4:00PM area on hill past Enduro-X Track

Friday - April 11, 2025

Free **YOUTH Trial** 1:00pm

PRO Tech Inspection: 3:00-3:30pm

Everyone Else: 3:30-5:00pm

Practice 11:00am – 4:00PM area on hill past Enduro-X Track

Saturday – April 12, 2025

OBSERVERS Meeting 7:30am

Tech Inspection: 8:00-8:30 am

AMA/NATC Trial Store USA Ntl Rd 3

& **53rd El Trial de Espana (PRO class only)**

PRO class ride 12-sections 2-loops

PRO Class ride + 4 Shootout sections 2-loops

Others ride 12-sections 3-loops.

Riders Meeting: 8:45 – 9:00am

START posted at HQ 9:00am

Free **YOUTH Trial** 10:00am

FOOD CART (T.B.D.) Open 12:00 – 7:00pm

PRO Shoot-Out 2:00 - 6:00pm

USA Trial des Nations Team announced &

AWARDS 6:30-7:00pm

Sunday – April 13, 2025

OBSERVERS Meeting 7:30am

Tech Inspection: 8:00-8:30 am

AMA/NATC Trial Store USA Ntl Rd 4

All classes ride 12-sections 3-loops

START 9:00am

AWARDS 6:00 pm

All times are approximate and subject to change without notice.

SHERCO



Verigo



SCORPA

TRS
MOTORCYCLES

EM
ELECTRIC MOTION



AMA/NATC Trial Store USA National Rd 3 & 4

53rd EL TRIAL de ESPAÑA



SOCAL TRIALS ASSOCIATION

MotoTrial Scoring

HOW MotoTrials ARE SCORED

The object of a MotoTrial is to ride a specified piece of terrain with entry & exit gates along with side boundaries (Known as a “Section”). The rider with the lowest total score wins the event, just like golf. Each rider is allowed to “Observe” (Walk) each section before riding it.

PEANLTY POINTS:

- 1-pt. Footing once
- 2-pt. Footing twice
- 3-pt. Footing more than twice

FAILURE POINTS:

- 5-pt. Moving backwards while “footing”
- 5-pt. Cross or break a section boundary
- 5-pt. Handlebar touches the ground
- 5-pt. Dismounting from the machine
- 5-pt. Cross your own tracks
- 5-pt. Receive outside assistance in a section
- 5-pt. The rider changes the section severity

TRIALS SUPERSTORE

